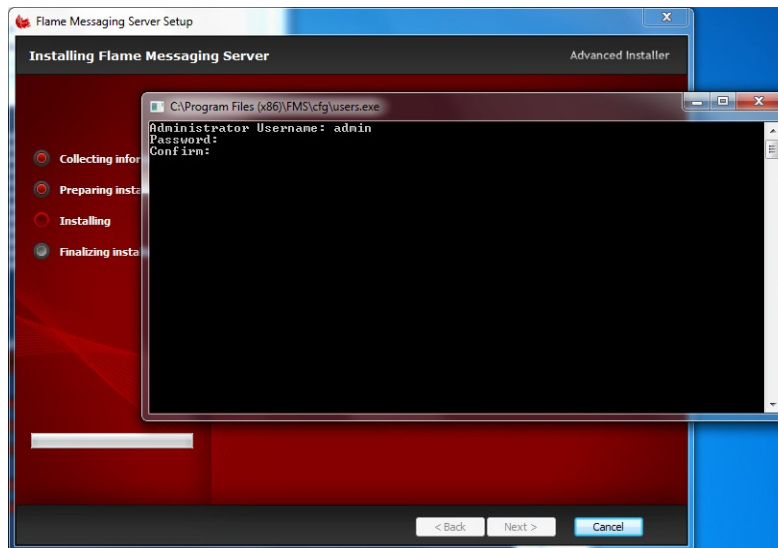


Date: 8. October 2011

Notes on FMS 5.3.1-1 Windows Installation

Administrator Username and Password

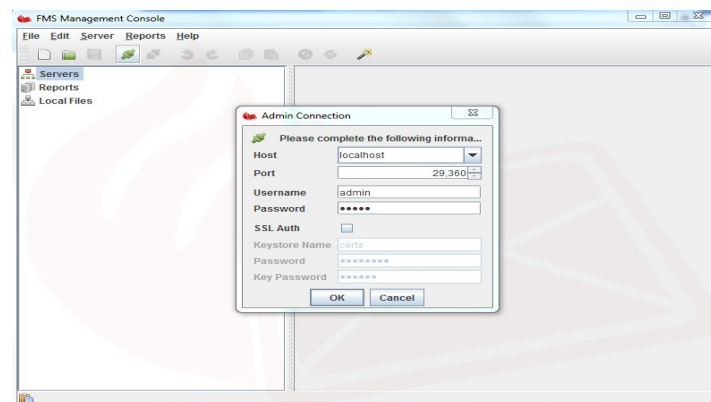
During the installation phase a screen will pop up requesting the name of the Administration user and password. This user is required for the FMS Management Console login. Details of the pop up screens are as follows



The Administrator username and password must be entered to connect to the FMS server using the FMS Management Console

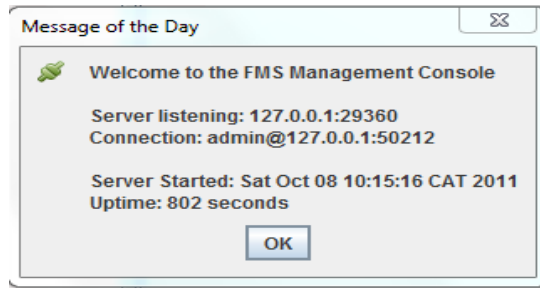
Management Console

Once the installation process is complete the FMS Management Console will be invoked as follows



Connect to the FMS server with the username and password as entered in the previous section. Do not select SSL Auth at this stage. Details on connecting across a secure link and the associated setup and exchange public keys for the Administration connection may be found in the FMS Manual.

Once logged on the following welcome screen will be displayed.



Simply select OK to proceed with the connection

Evaluation License

The FMS distribution typically comes with a 3 Month evaluation key. To load this key onto the FMS server simply connect to the server using the FMS Management Console (MC) as in the previous step, the right click on the Server Icon in the tree displayed in the left frame of the MC and select the fms.lcn evaluation from the FMS distribution, selecting OK on the final prompt, as follows

